



Rob Brown, CEO

Saginaw

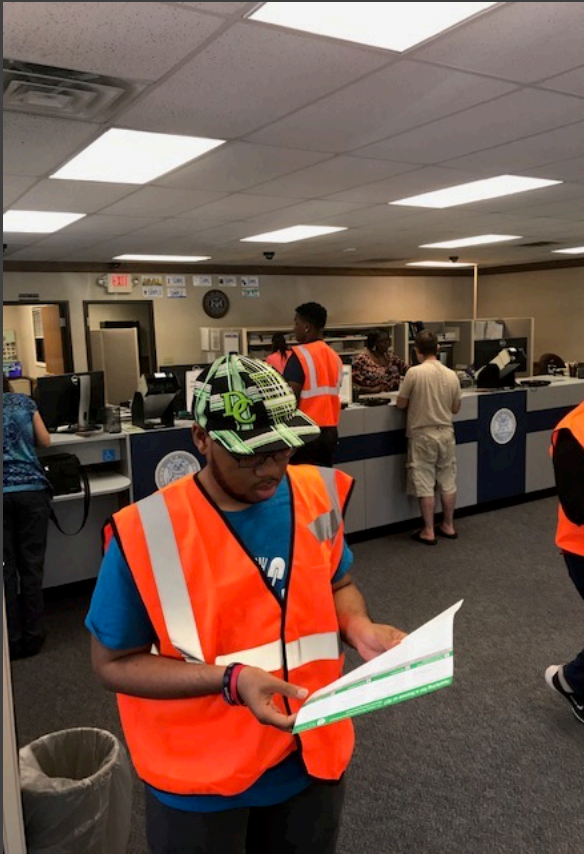
We Build Opportunity



Brian Keenan-Lechel, Director

H.I.R.E. and MDNR Summer Youth Employment Program at First Ward





Summer Youth Employment Program

- Exposure to careers in conservation
- Program includes education and recreation days



City of Saginaw Fire Department Collaboration



On-Site Across Michigan



Enjoying and protecting
public recreation





Exploring new
opportunities





E CENTER

ENTRANCE













OUTER
ADVENTURE
CENTER



WYOMING
NATURAL
HISTORY
MUSEUM



SEARCHING FOR THE ASPEN STAND
Aspen stands are a defining feature of the western United States. They are found in the mountains of Colorado, Utah, and Wyoming, and are a vital part of the ecosystem. Aspen stands are a type of forest that is made up of aspen trees. They are a vital part of the ecosystem and provide habitat for many species of plants and animals. Aspen stands are also a source of timber and are used for a variety of purposes. They are a beautiful and important part of the western landscape.















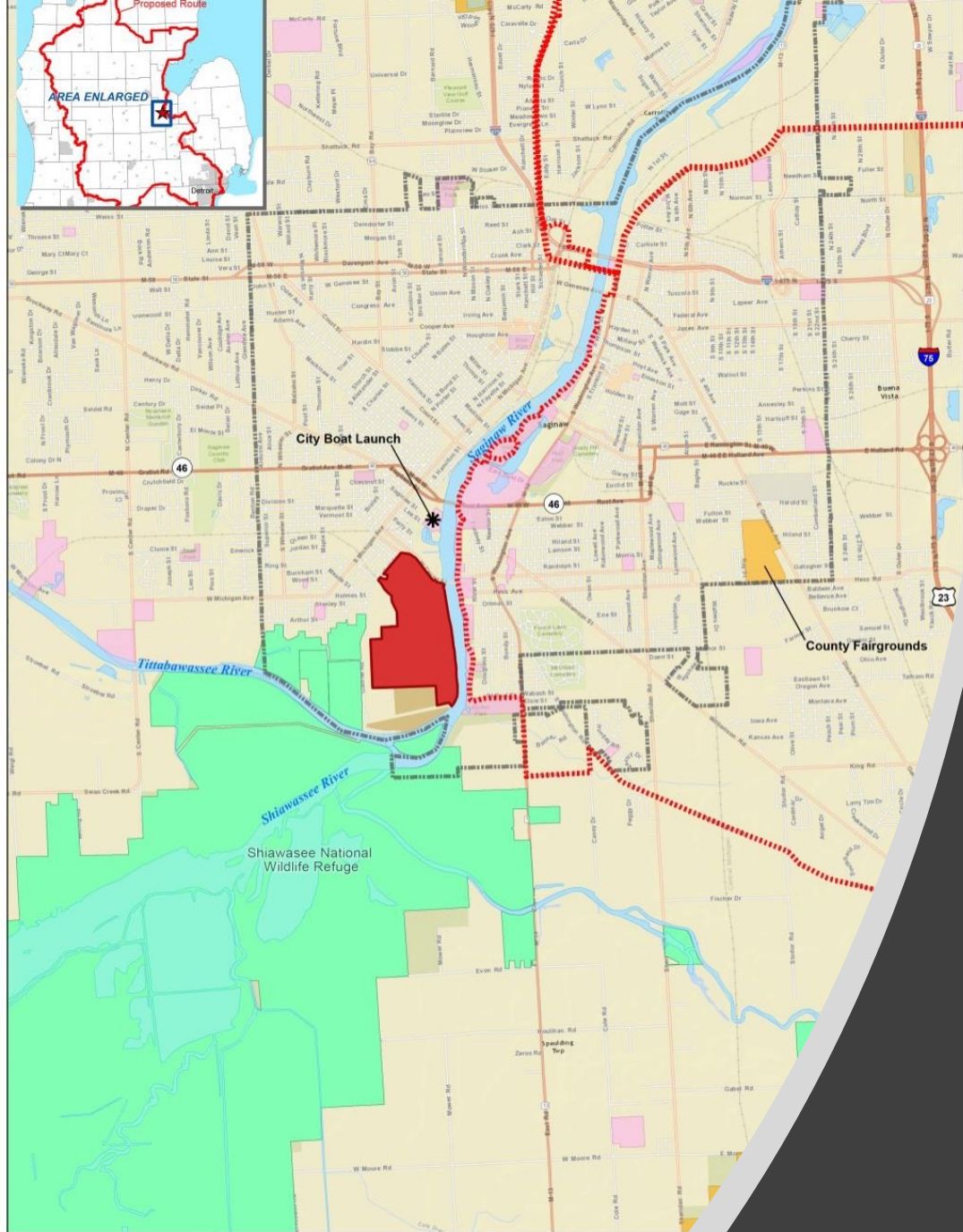
Saginaw River Headwaters Rec Area

A partnership
between Michigan
Department of
Natural Resources and
Saginaw County



Saginaw River Headwaters Rec





Site Location

77 W. Center Street
Saginaw, MI 48602

Proposed Riverfront Park - Project Location

Legend



Former Saginaw Malleable Iron

Remedial activities began in the 1980's with direction from US EPA and EGLE (formerly DEQ)

Remedial Activities

cont'd

After plant closure in 2008
RACER Trust, EGLE and EPA

RACER Trust was assigned \$12 million for remedial activities and continued monitoring through the General Motors bankruptcy proceedings

Approximately \$5 million spent to date with \$7 million remaining for continued monitoring and future remediation if necessary.





Additional remediation photos

The site currently meets EGLE-approved site-specific recreational use standards for passive recreation



Riverfront Park: Partnership between DNR and Saginaw County

- Michigan State Parks and Outdoor Recreation Blue Ribbon Panel (2012)
 - *Use parks and recreation areas as a key tool for revitalizing Michigan's core urban areas by creating four to five Signature Parks and integrating green infrastructure in Michigan's urban redesign and redevelopment efforts*
- Key actions from the Public Land Strategy (2013): Focus regionally, link facilities, increase collaboration, participate in integrated planning
 - Increase participation in wildlife watching by 10%
 - Provide public lands access to citizens within 15 miles of their home.



Photo credit: The Nature Conservancy



MDNR and Saginaw County Parks Partnership

- DNR owns the property, worked with Saginaw County to develop liability protections, applied for / received 3 development grants
- Lease with Saginaw County for day-to-day management
 - Maintenance activities
 - Programming
- Natural Resources Damage Assessment
 - \$750,000 in a maintenance endowment
 - \$250,000 for development and habitat restoration

Photo credit: The Nature Conservancy

Project Funding

- Saginaw Community Foundation - \$30,000
- Michigan Natural Resources Trust Fund – 3 grants totaling \$890,000
- ~~NRDA Tittabawassee River Settlement Funding - \$1,000,000 (\$750,000 maintenance endowment)~~
- \$500,000 MDNR ARPA Allocation
- \$20,000 WIN Grant
- The Nature Conservancy, Rotary Club and private donors: \$30,000

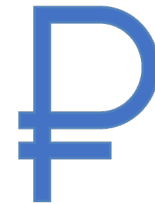
Total: \$2.47 million

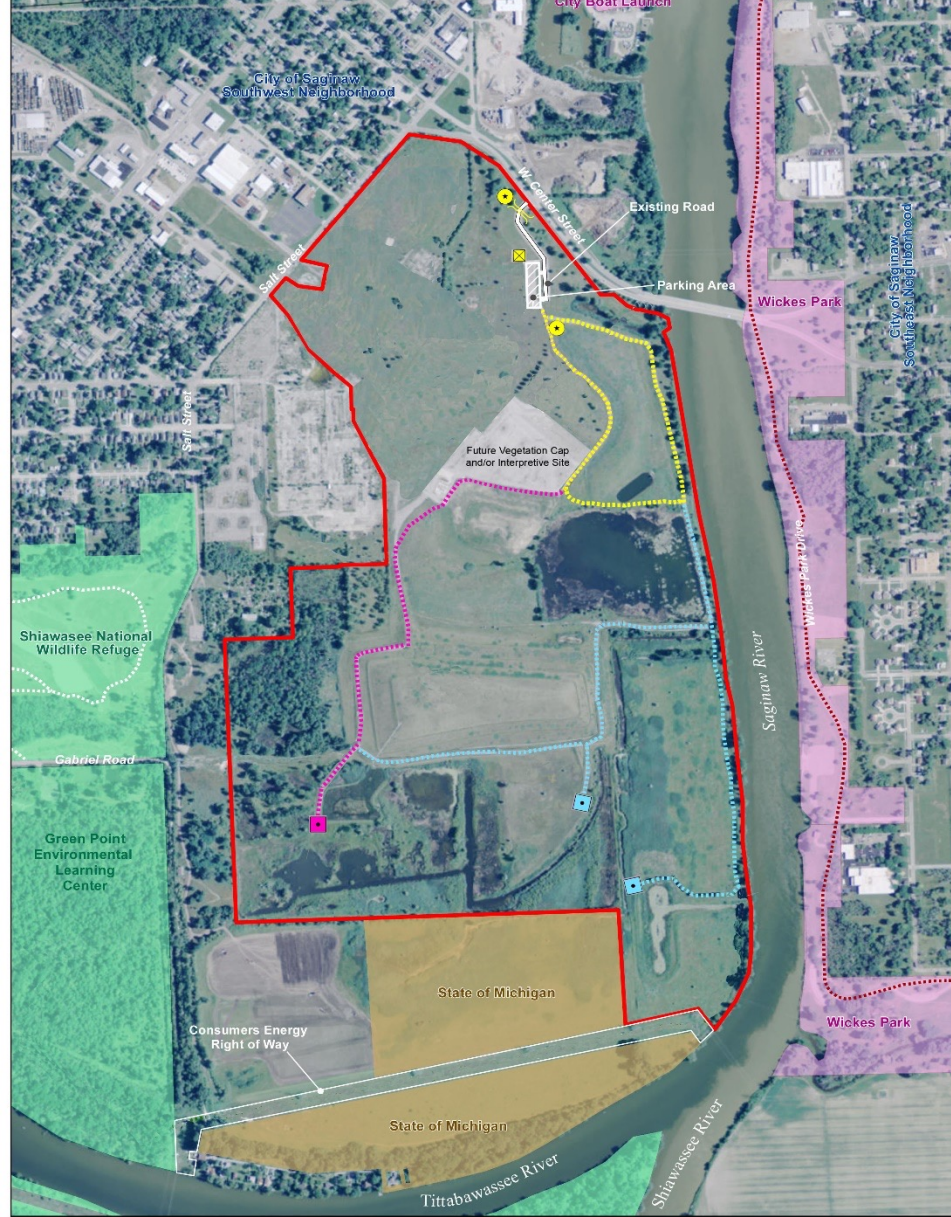
\$400,000 NRDA Round II pending
\$315,000 GLWRFA pending



Reducing risks - Liability

- Prospective Purchaser Agreement (PPA) from the USEPA: Covers state and county
- Baseline Assessment and Due Care Plan
- Restrictive Covenants
- RACER funding dedicated to this site for continued monitoring and future remedial work if necessary
- Additional protections

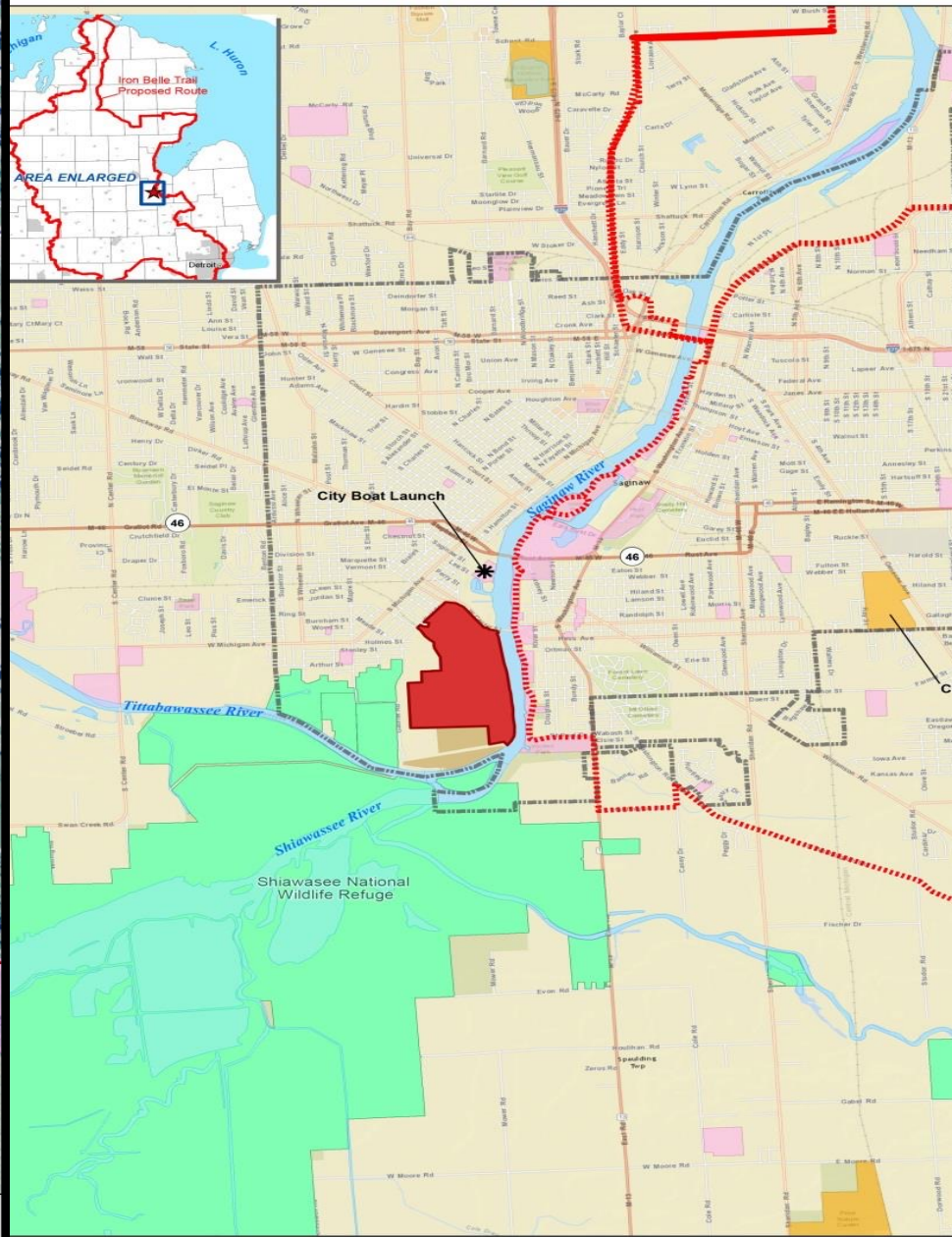




Proposed Recreation Site Development Plan

Legend

- Proposed Property Boundary (332 acres)
- City of Saginaw
- Existing Foot Trail
- Proposed Iron Belle Trail
- Phase 1 Development (MNRTF 2016 Grant)
- Entrance Gate
- Signage
- Concrete slabs for portable restrooms
- Loop Trail
- Phase 2 Development (MNRTF 2017 Application)
- Observation Trail
- Observation Platform
- Future Phase
- Riverfront Trail
- Observation Platform
- Connection Point



Proposed Riverfront Park - Project Location

Legend

- Proposed Project Boundary
- State of Michigan
- Saginaw County
- Local (City or Township)
- U.S. Fish and Wildlife Service
- Belle Trail
- Existing Trail
- Proposed Trail

Michigan Natural Resources 2016 Trust Fund Grant - \$290,000



- 0.7 mile trail development
- Parking lot/ trailhead development
- Vault toilet pad
- Entrance gate
- Entry signs

Phase 1 Development (MNRTF 2016 Grant)

- Entrance Gate
- ★ Signage
- ☒ Concrete slabs for portable restrooms
- Loop Trail

- ▭ Proposed Property Boundary (332 acres)
- ▭ City of Saginaw
- Existing Foot Trail
- Proposed Iron Belle Trail



Michigan Natural Resources 2017 Trust Fund Grant - \$300,000

- 0.7 mile trail development
- Scenic overlook






 Proposed Property Boundary (332 acres)





Phase 2 Development (MNRTF 2017 Application)

-  Observation Trail
-  Observation Platform

Future Phase

-  Riverfront Trail
-  Observation Platform
-  Connection Point

Phase 1 Development (MNRTF 2016 Grant)

-  Entrance Gate
-  Signage
-  Concrete slabs for portable restrooms
-  Loop Trail



And now?

After almost a decade of restorative transformation,
these 334 acres return to public ownership and accessibility...















Recreate

Sa Sa Sa Sa Sa **Saginaw County Parks**

PLAY HERE



Q&A