

Muskegon County Parks and Recreation Areas

Two County Parks/Facilities in the Urban Area

Heritage Landing

- Served by public transit, located in Downtown Muskegon, borders recreation trail, new accessible playground planned

Dune Harbor Park

- Fully acquired in 2022, 376 acres, Lake Michigan frontage, accessible via public transit demand/response; very close to City of Muskegon lakefront parks; future accessibility planning for all projects

Additional County Parks and Recreation Areas

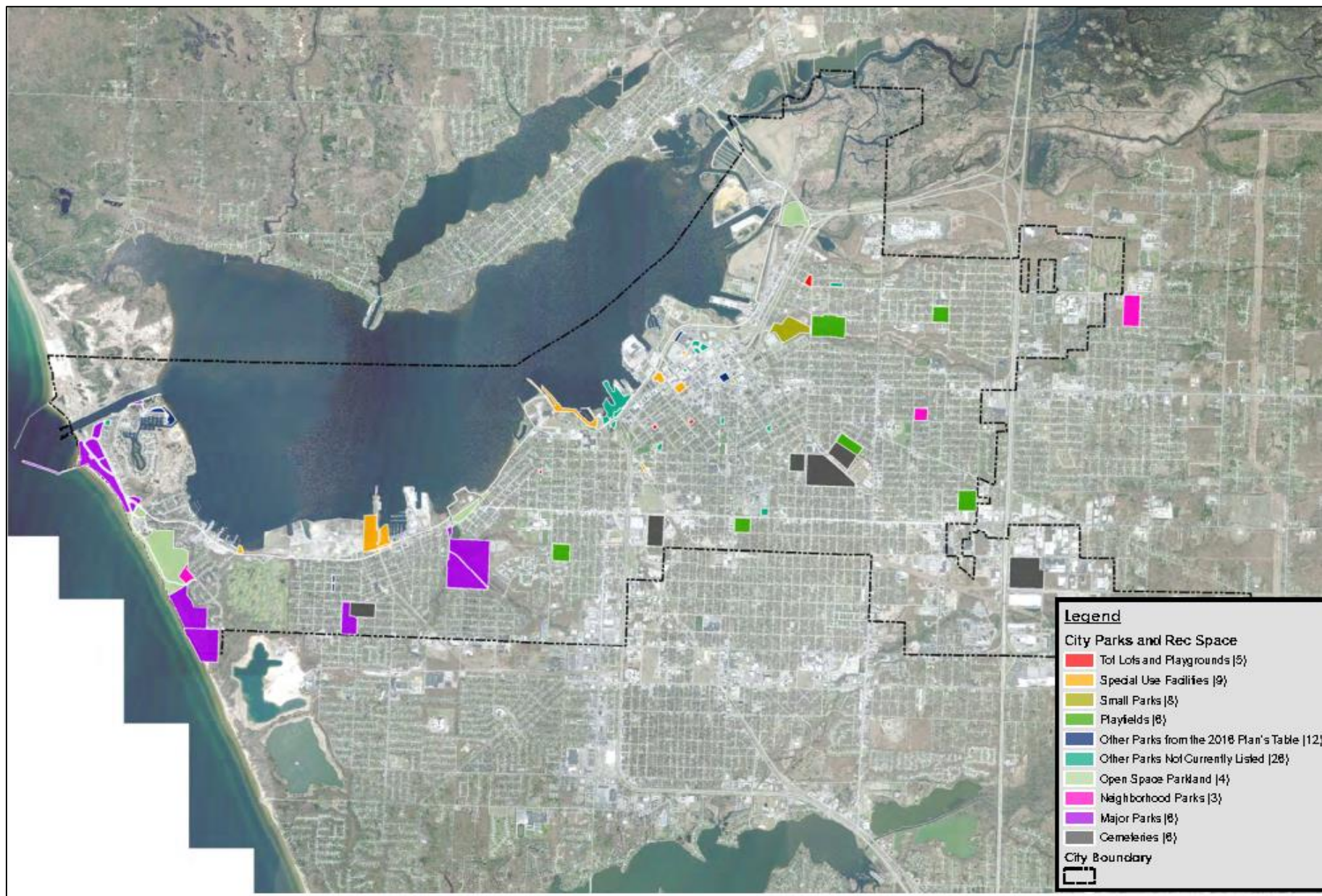
- Two campgrounds on Lake Michigan/one inland (235, 85 and 25 sites), volunteer programs, accessible facilities, accessible campsites and accessibility planning for all projects
- Disc golf courses and inland lake boat launch
- Mosquito Creek Mountain Biking Trails on County property

Muskegon County Parks and Recreation

7 parks/campgrounds, 1 launch, festival grounds/cruise ship dock



City of Muskegon – 35 parks, launches, indoor facilities, campground & outdoor recreation areas



Muskegon County Trails Planning

Black – Existing; Green – Conceptual; Red – Regional conceptual

