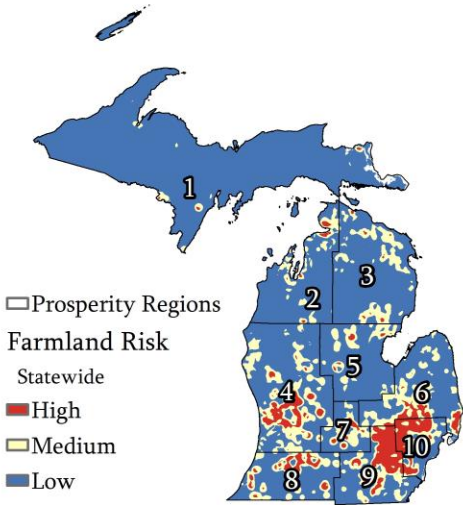
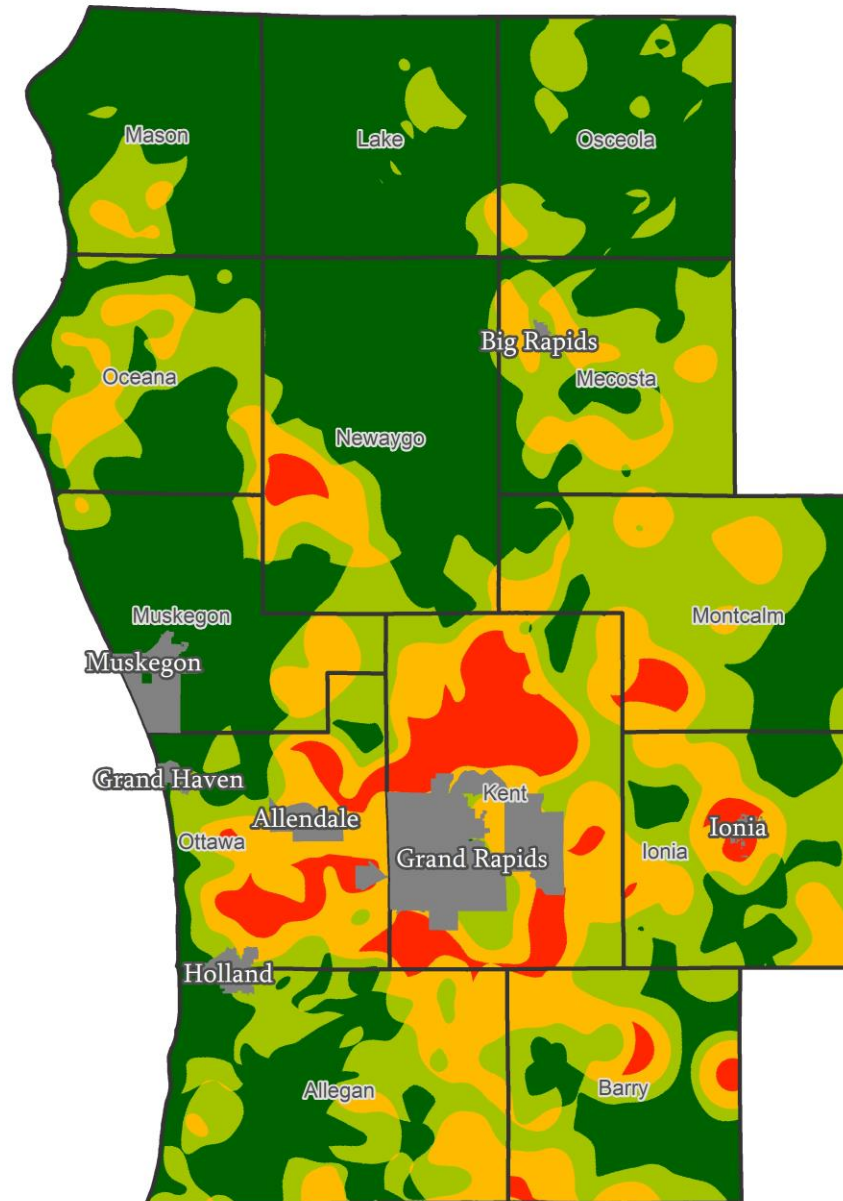


Relative Risk at a Statewide Level



# Farmland Risk Assessment

Risk of Increased Development on Michigan's High Quality Farmland within Prosperity Region 4

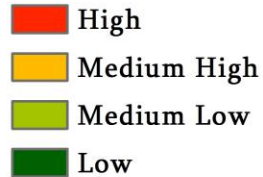


## Prosperity Region 4

Highly Populated Areas (Grey)

Counties (White outline)

Relative Farmland Risk within Prosperity Region 4



This farmland risk assessment depicts the relative risk to Michigan's farmland based on the amount of high-quality farmland and the amount of increased development occurring in an area. This visualization was produced using broad scale data and therefore should not be used below a sub-county level.

